

*IMSE SurfaceLight demonstrators with stone and wood surfaces. The parts have been produced together with Novem Car Interior Design GmbH.*

## **IMSE® SURFACELIGHT FOR EDGE-TO-EDGE, DYNAMIC ILLUMINATION**

Fully dynamic and programmable ambient lighting feature in a super slim package, enabling illumination on any surface material.

IMSE SurfaceLight integrates LEDs, optics, and structure into a thin, one-piece design. It enables truly dynamic RGB lighting that runs across the entire surface, from edge to edge. Different variants offer versatile options for illuminating soft textile surfaces, wood, stone, and other materials, all applicable to shaped surfaces in line with the design vision.

## PART OVERVIEW

- **Single-piece**, seamless design
- **Thickness:** 3.5 - 10.2 mm (0.14 - 0.4 inch)
- **Other measurements:**  
495 x 12.5 mm (19.5 x 0.5 inch)
- **Weight:** 230 - 630 g (8.11 - 22.22 oz)
- **In-mold electronics:** circuitry, lighting (smart, top-shooting RGB LEDs), connector
- **Light intensity:** depends on the design and surface materials
- **Validated reference design** with proven manufacturing capability



## KEY ADVANTAGES

**One-piece electronics integration:** full integration reduces components, interfaces, and assembly complexity.

**Thin and lightweight:** enables integration in tight spaces.

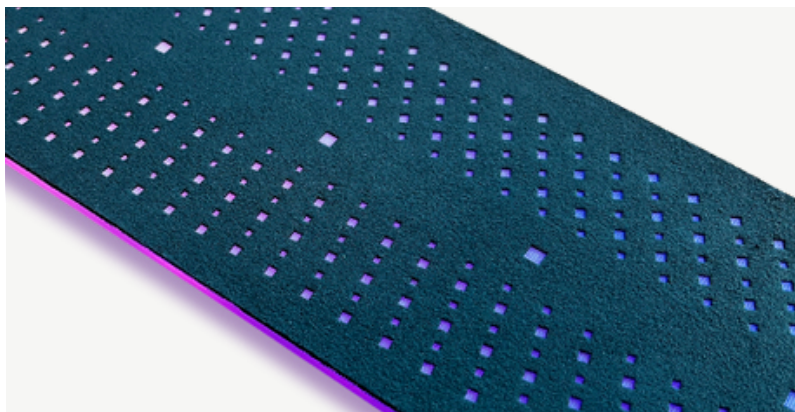
**Design freedom:** flexibility for designing lighting and functionality on shaped surfaces.

**High-quality lighting:** dynamic RGB lighting with minimal use of LEDs and true two-axis dynamic animation in any color.

**Low power consumption,** high light efficiency.

**Robust, production-ready construction:** encapsulated structure delivers stable performance and durability in demanding environments, minimizing rattle and noise.

**Sustainable and cost-efficient choice:** Reduction in CO<sub>2</sub>-e from reduced material use, simplified supply chain, and minimized power consumption, while creating savings in costs.



## APPLICATIONS

- **Dynamic and gradient color ambient lighting** on any decorative surface, from automotive interiors to smart homes and beyond
- **Consumer electronics** brand lighting and status or operation mode indication
- **Industrial control** surfaces and guidance elements
- Available for **several surface materials:**
  - Soft, textile surfaces
  - Stone, wood, and other natural materials
  - Fully integrated and in-mold, or wrapped surface finishes
- Integrating touch functionality broadens the available scope of features

*SurfaceLight with a soft textile surface wrapping by Sage Automotive Interiors.*